



# MINISTRY GUEST HOUSE



K a w a n g w a r e , K e n y a

**VAPOR**  
MINISTRIES

# YOUR LIFE-SAVING IMPACT

**1,793,850**

**GOSPEL  
IMPRESSIONS  
MADE**

**3,498,832**

**MEALS SERVED**

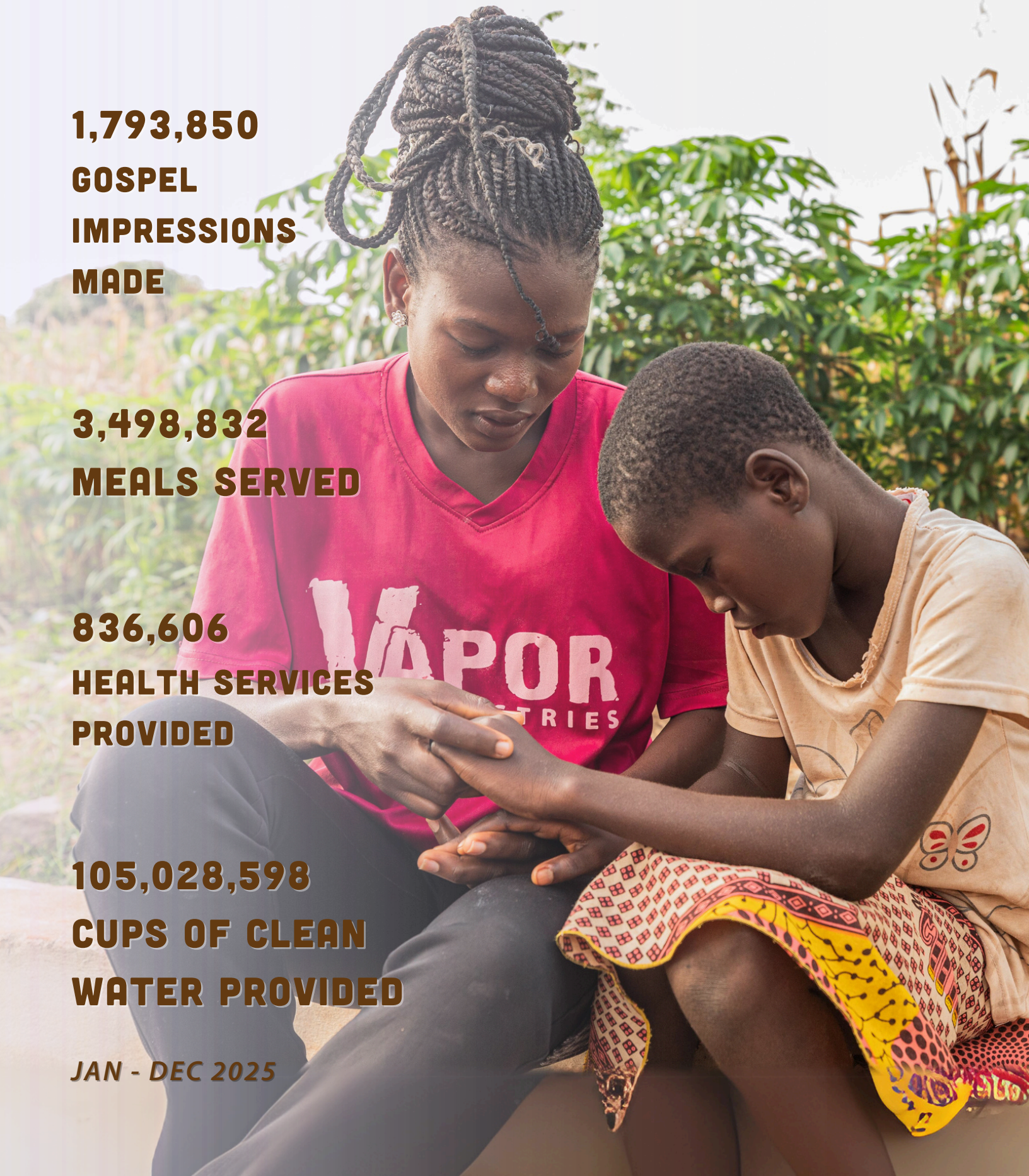
**836,606**

**HEALTH SERVICES  
PROVIDED**

**105,028,598**

**CUPS OF CLEAN  
WATER PROVIDED**

**JAN - DEC 2025**



Dear Friends,

When I first walked into Kawangware over twenty years ago, it was hard to imagine the scope of what God would do in this community. What began as a step of faith has grown into a thriving ministry where lives are being transformed each day. Today, we are witnessing disciples being made, clean water reaching families, and hope taking root in places that once felt forgotten. As the work has grown, so has the responsibility to steward it well. What God is building here is lasting, expanding, and calling for the kind of infrastructure that can support both the present need and the future vision.

Recently, we secured a facility just minutes from our Kawangware center that we believe will play a strategic role in this next chapter. With thoughtful renovation, this building will become a guest house that serves multiple purposes. It will provide a home for our East Africa Regional Manager, create a welcoming base for mission teams, and function as an income-generating property that strengthens the long-term sustainability of the ministry.

This is an opportunity to invest in something that multiplies impact. A place that supports leadership, hosts those who come to serve, and helps fund the work for years to come. Thank you for prayerfully considering how you might partner with us to bring this vision to life.

Grateful for you,



Micah McElveen  
Founder & CEO  
micah@vaporministries.org  
256.473.1313



## Positioned for Purpose

As our work in East Africa expands, so does our need for infrastructure to support operations, partnership development, and sustainable income generation. Hosting guests, whether mission groups, donors, or team members, is a key part of our model. These visits catalyze support, deepen engagement, and allow people to witness the impact firsthand.

Currently, housing large groups is costly and logistically challenging. Renovating this facility provides a sustainable, long-term solution.

Renovations will include:

- Guest room upgrades to host U.S. visitors and ministry partners
- Updates to spaces available as short-term rentals for revenue generation
- Dedicated residential space for our East Africa Regional Manager
- Renovation of the commercial kitchen to serve teams and events
- Furnishing and outfitting of meeting spaces for orientation, training, and debriefing
- Security improvements and landscaping for safety and excellence

**Operational Efficiency:**  
Reduces hotel costs and coordination time for operational trips.

**Donor Engagement:**  
Enables us to host partners on-site, enhancing vision casting and future investment opportunities.

# STRATEGIC VALUE

**Leadership Presence:**  
Provides a stable residence for the Regional Manager, enhancing leadership continuity and oversight.

**Income Generation:**  
Revenue from rental spaces help offset operational costs and directly supports ministry impact.



## Your Eternal Impact

We are deeply grateful for your heart for the Gospel and for those in need. Your partnership enables us not only to meet urgent needs but also to create spaces where lives are transformed, both now and for eternity. As we look ahead to this next step in East Africa, we're reminded that every significant advancement in the ministry has been made possible by the grace of God and the faithful generosity of people like you.

Would you prayerfully consider partnering with us to fund the renovation of this guest house? Your gift will provide a welcoming space for teams, a home for our regional leader, and a hub for ministry activity that will serve tens of thousands. We believe this project will multiply impact for years to come, and we'd be honored to link arms with you to make it a reality.

## PARTNERSHIP OPPORTUNITY

### KAWANGWARE GUEST HOUSE

LANDSCAPING & CONSTRUCTION	\$	56,000
LEGAL FEES & PERMITS	\$	6,000
FURNITURE, FIXTURES, & EQUIPMENT	\$	23,000
GENERAL CONDITIONS	\$	17,000
UPSTART LEASE & WORKING CAPITAL	\$	25,000
CONTINGENCY	\$	11,000
O&A	\$	22,000

**TOTAL**

**\$ 160,000**

