



NEW ENGLISH-SPEAKING  
WEST AFRICA REGIONAL CENTER

**PORT LOKO, SIERRA LEONE**



**VAPOR**  
MINISTRIES

# YOUR LIFE-SAVING IMPACT

**1,793,850**

**GOSPEL  
IMPRESSIONS  
MADE**

**3,498,832**

**MEALS SERVED**

**836,606**

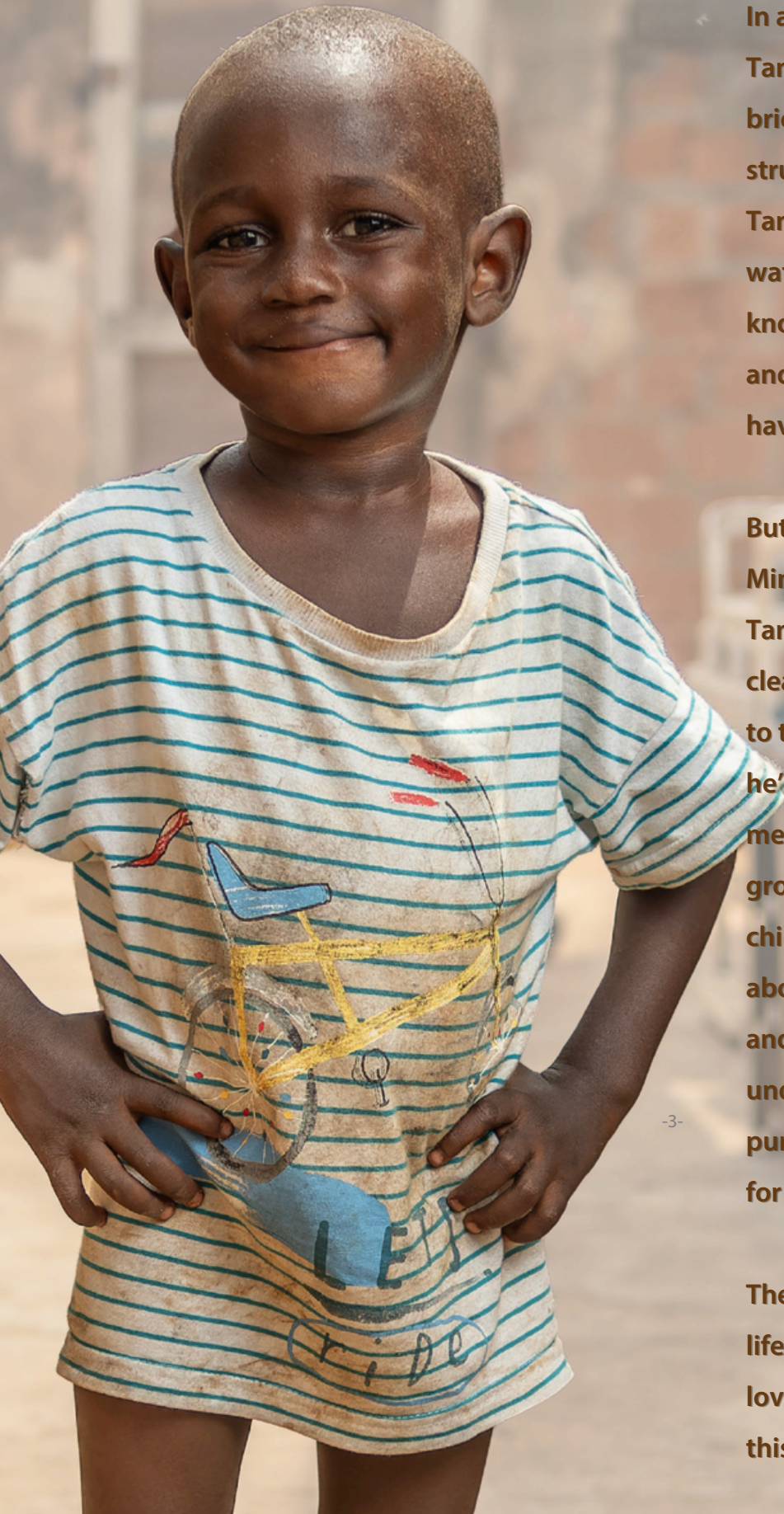
**HEALTH SERVICES  
PROVIDED**

**105,028,598**

**CUPS OF CLEAN  
WATER PROVIDED**



# HOPE CLOUDS ARE FORMING



In a rural village in West Africa, a boy named Tano lives with his mother in a humble mud-brick home. Life has been a constant struggle. For as long as he can remember, Tano has walked for miles to collect cloudy water from a nearby river, water that he knows makes his family sick. Food is limited, and his mother often goes without so he can have something to eat.

But a new day is coming. When Vapor Ministries launches a center in his village, Tano will experience the joy of drinking clean, safe water. No more exhausting treks to the river. No more illness. At the center, he'll have access to nutritious meals, medical care, and a safe place to learn and grow. He'll laugh and play with other children, his stomach full, and hear stories about Jesus, stories filled with love, hope, and redemption. His coach will help him understand that his life matters, that he has purpose, and that Jesus has a beautiful plan for his future.

The sky is shifting. Soon, Tano will wake to a life with greater health, learning, and the love of the One who sees him. Help us bring this hope to children like Tano in Port Loko.

# PORT LOKO CENTER

In places like Sierra Leone, where extreme poverty is widespread and hope can feel out of reach, the need for transformational, lasting impact is urgent. Vapor Ministries has a proven model for addressing poverty at its root, providing clean water, food, health services, jobs, and Gospel-centered discipleship, all while equipping local leaders and building sustainable systems that multiply eternal return on investment.

We are now positioned to establish our English-speaking West Africa Regional Center in Sierra Leone, one of the poorest nations in the world, and home to millions living in deep material and spiritual need. Many in this region lack access to life's basic necessities, and even fewer have encountered the hope of Christ. This center will meet urgent physical needs while also serving as a launch point for reaching the unreached, bringing hope to communities long overlooked and underserved.

This isn't just about building a facility; it's about unleashing potential. By investing in this next regional hub, donors will help create a platform for deep, holistic impact in one of the most spiritually and economically underserved areas on the planet.



*The Port Loko center will be our 9<sup>th</sup> center globally and will serve as our English-speaking West Africa Regional Office.*

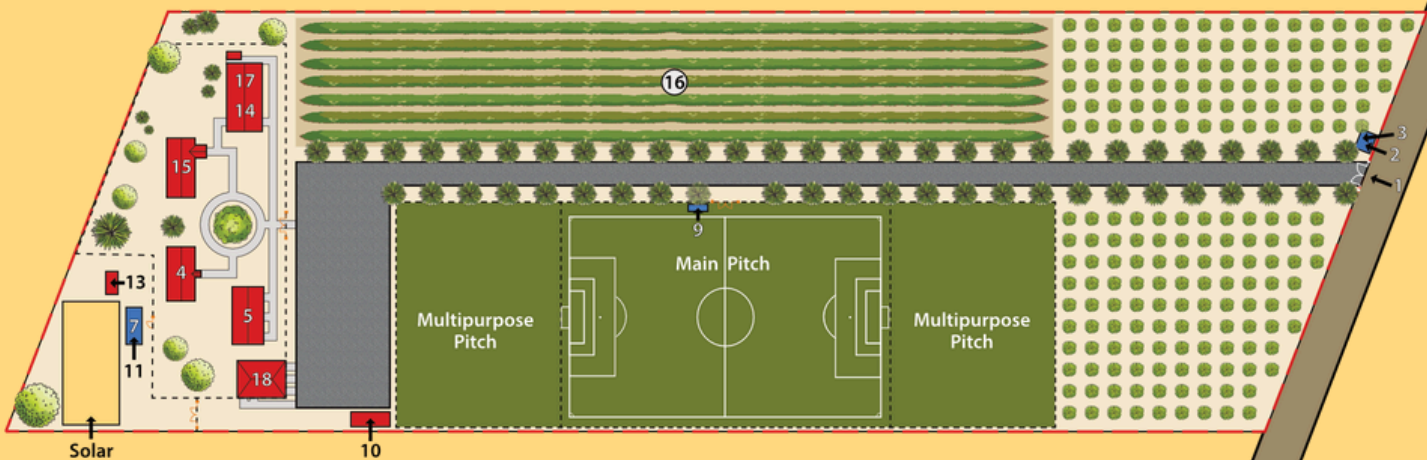
# PREPARING THE GROUND FOR LIFE-CHANGING IMPACT

Every center begins with land, but what we build on it determines how many lives we can reach and how deeply we can serve. At the Sierra Leone Regional Center, thoughtful property development is key to creating a place where physical, spiritual, and economic transformation can flourish.

This phase includes:

- Constructing soccer fields that will host our discipleship sports leagues, drawing hundreds of children, youth, and adults into structured programs where they encounter mentorship, community, and the message of Christ through the game they love.
- Establishing perimeter fencing to secure the grounds, protect infrastructure, and create a safe environment for children and families who visit daily.
- Preparing space for agricultural development, including clearing, grading, and designating plots for sustainable farming, job creation, and food production that will serve the community and support the ministry.

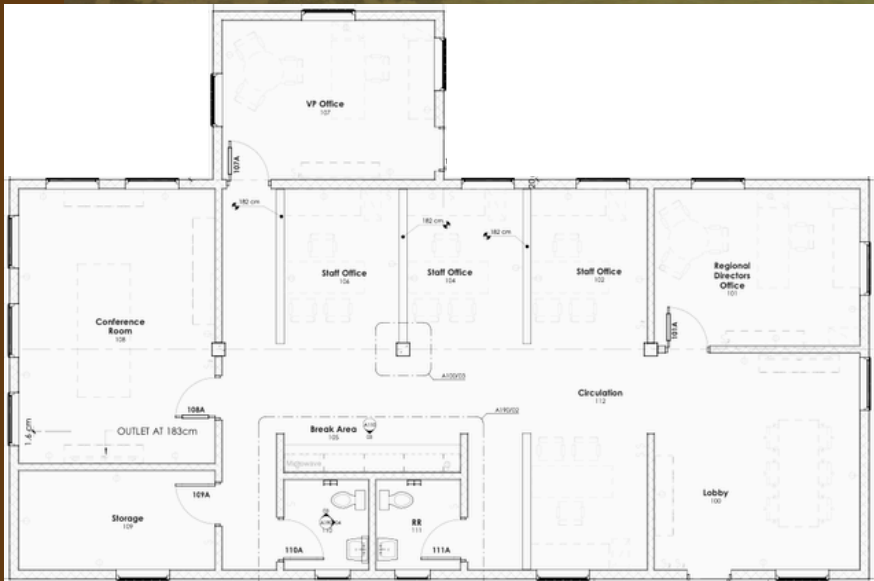
Developing this land is not just about building; it's about creating a functional, welcoming, and mission-aligned environment where transformation can take root and grow. With every step of development, we're laying the foundation for hope, opportunity, and lasting impact.



## LEGEND

- |   |                                    |
|---|------------------------------------|
| 1. Barn                                   | 9. Main Electrical Building        |
| 2. Admin Building                         | 10. Latrine                        |
| 3. League Building                        | 11. Water Distribution Point       |
| 4. Concrete Pad                           | 12. Drinking & Handwashing Station |
| 5. Storage Building                       | 13. Regional Office                |
| 6. Water Tower                            | 14. Hornsby Prayer & Equipping Hub |
| 7. Underground Water Filtration & Storage | 15. Main Gate                      |
| 8. Mach/Elec Building                     | 16. Future Sovereign FC Location   |
|   | 17. Garden                         |

# REGIONAL OFFICE



As Vapor Ministries expands its reach across West Africa, strong local leadership and coordinated operations are essential. The Regional Office at the Sierra Leone center will serve as the central hub for oversight, strategic planning, and team support—not only for this site but for future centers across the region.

This facility will house key regional staff responsible for directing ministry efforts, ensuring program excellence, and maintaining alignment with our mission and values. It will be the space where leaders are developed, decisions are made, and systems are refined to maximize long-term impact. This office enables us to raise up and release high-capacity indigenous leaders, support field teams with excellence, and drive the replication of Vapor centers in other underserved communities.

It's more than office space, it's a launchpad for regional transformation.

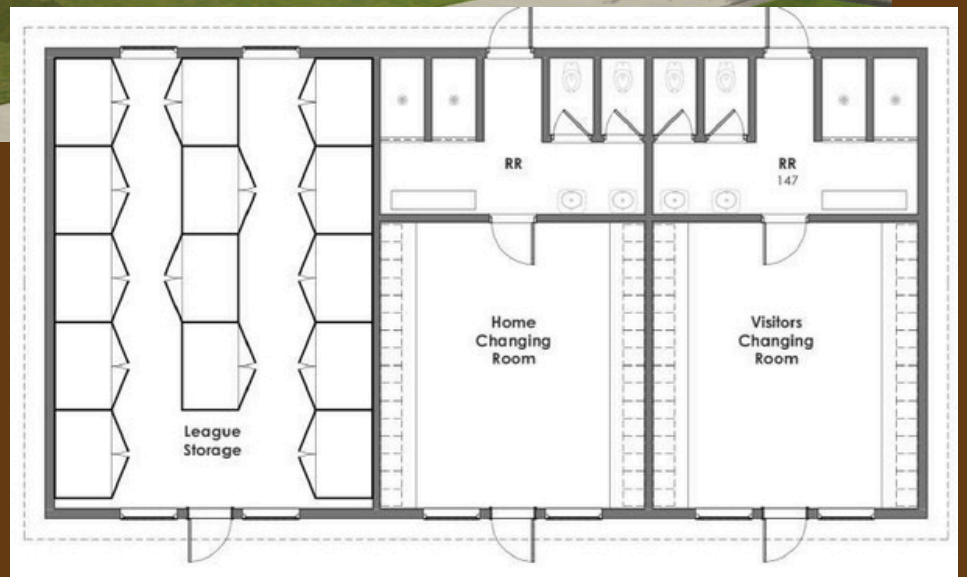
# ADMINISTRATION BUILDING



At Vapor Ministries, we believe lasting change happens when local leaders are equipped to lead. That's why all of our ministry activities are directed and overseen by indigenous staff, men and women who know the culture, understand the needs, and are deeply committed to serving their own communities for the glory of God.

The Administration Building is a critical piece of infrastructure that strengthens this model. It provides dedicated office and meeting space designed to increase effectiveness, foster collaboration, and fuel a unified focus on our mission. From strategic planning to daily operations, this facility equips our local teams to lead with excellence, ensuring every program and initiative flows from a shared vision, strong culture, and gospel-driven purpose.

# LEAGUE BUILDING



The League Building serves as the operational hub for our discipleship leagues, housing essential equipment like jerseys, balls, cones, nets, and other supplies that make each game possible. It also includes modern restroom facilities and changing rooms to support the hundreds of children, youth, and adults who gather at the center each day. More than just a place for storage and logistics, this building supports one of our most powerful outreach tools, sports. It helps create a welcoming environment where people come to play the game they love and encounter the truth of the One who loves them.

# MASTER WATER PROJECT

Access to clean water is one of the most urgent physical needs in Sierra Leone. Many families walk miles each day to collect water from unsafe sources, leading to preventable disease, missed opportunities for work and school, and a daily struggle just to survive.

The Master Water Project at our new regional center will change that. This large-scale system is engineered to provide free, clean water to the entire surrounding community, reaching thousands of people with one of life's most basic and transformative resources. Sourced, purified, and distributed through reliable infrastructure, this project will not only meet immediate physical needs but will also serve as a powerful demonstration of God's love in action.

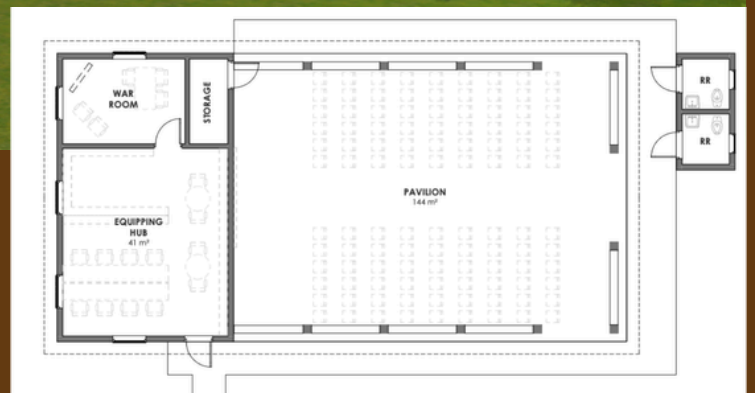
For many, this will be the first time they've had consistent access to safe drinking water. It will reduce illness, restore dignity, and create margin in the lives of families who are often in survival mode. And because the system is rooted in our center, it opens the door for deeper relationships and long-term ministry as people return day after day, not just for water, but for hope.



# HORNSBY PRAYER & EQUIPPING HUB



The Hornsby Prayer & Equipping Hub is the spiritual and strategic heartbeat of our center, uniting intercession and investment in people under one roof.

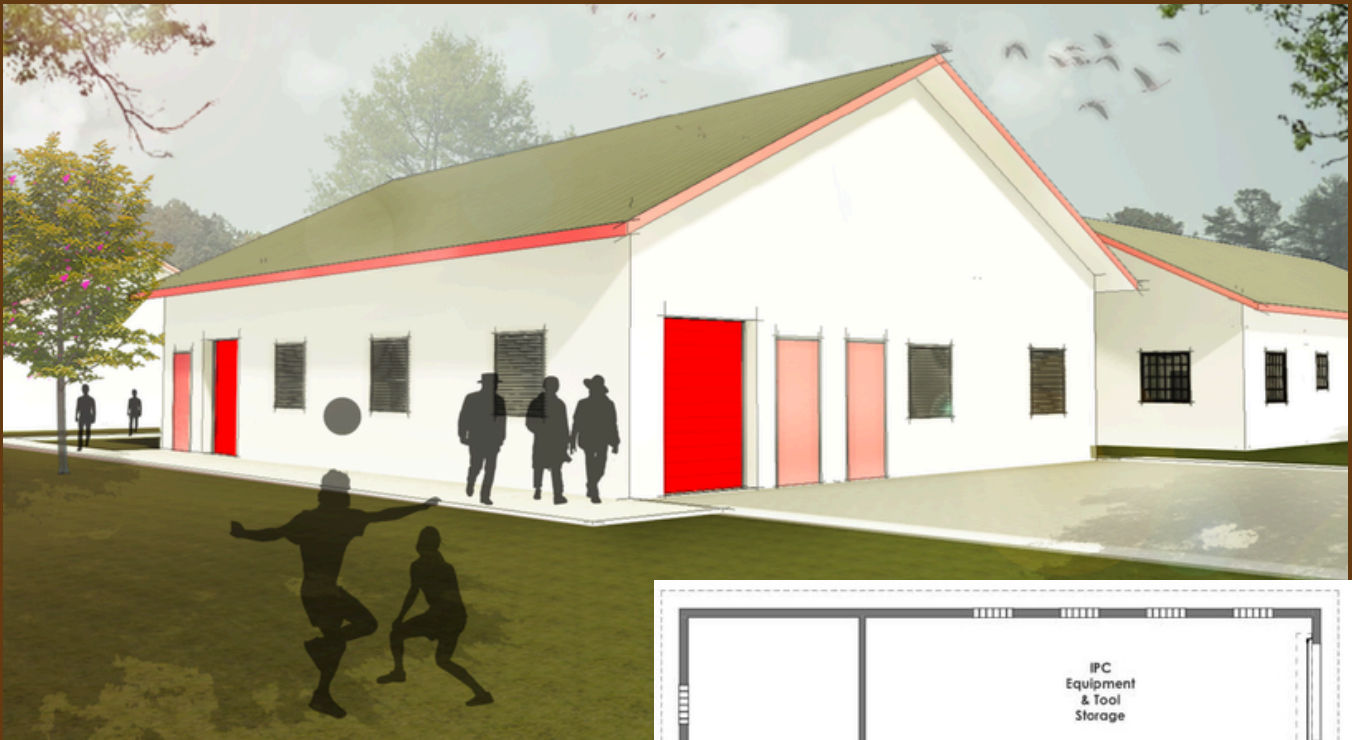


On the Prayer side, a dedicated war room provides sacred space for worship, praise, and intimate communion with God. It offers our team and community members a place to retreat, refocus, and seek the Father together. This space also anchors our commitment to continuous intercession, serving as a local station in Vapor's 24-hour global prayer chain, a place where Watchmen stand on the wall for their people.

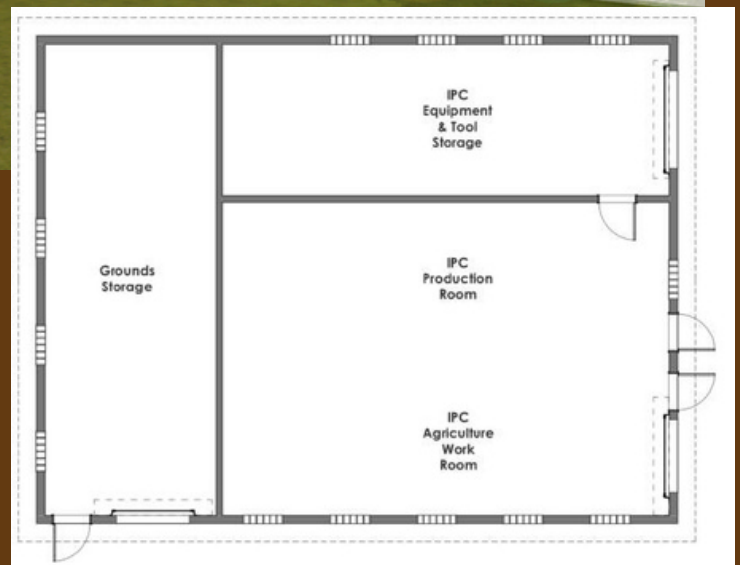
On the Equipping side, the Hub features training space and access to vital resources, designed to develop leaders, strengthen staff, and empower community members with the skills and knowledge needed to thrive. From discipleship and leadership development to practical training in areas such as business and agriculture, this space serves as a launchpad for transformation.

By merging prayer and equipping, this Hub fuels both the spiritual depth and practical impact of our work, multiplying today's efforts and paving the way for tomorrow's outreach.

# BARN



The Barn is a vital multipurpose facility that supports both sustainability and stewardship.



One section of the building is dedicated to our International Sustainability Department, where agricultural products are produced for sale in local markets. This initiative helps generate revenue to offset operating expenses and increase the ministry's long-term viability. The remaining space serves as the operational base for our Grounds Team, housing landscaping equipment, carpentry tools, maintenance supplies, and hardware essential for keeping the center's facilities in excellent condition. By combining revenue generation with practical infrastructure support, the Barn plays a key role in advancing our mission with excellence and efficiency.

# AGRICULTURE DEVELOPMENT



Agricultural development at the Sierra Leone center will play a critical role in advancing both sustainability and community impact. Through cultivated plots of land, we will grow food that supports our feeding programs and reduces reliance on external sources. This not only ensures consistent nutrition for those we serve but also models responsible land stewardship and food security.

Beyond production, the agricultural initiative serves as a platform for training, equipping local people with practical skills in farming, soil management, and sustainable practices. These trainings empower families to grow their own food, generate income, and break cycles of poverty. Agriculture at the center is more than a field of crops, it's a field of opportunity, where lives are nourished, dignity is restored, and transformation takes root.

# STRATEGIC INVESTMENT IN ETERNAL IMPACT

The opportunity before us in Sierra Leone is both urgent and unparalleled. This next regional center will not only meet critical physical needs through clean water, food, health services, and job creation, but will also serve as a launching point to reach the unreached with the life-changing message of the Gospel. Every building, every program, and every piece of infrastructure has been intentionally designed to serve people with excellence and equip local leaders to transform their own communities from the inside out.

This is more than a ministry site, it is a center of hope, transformation, and Gospel advancement. By partnering with us to fund this center, you're not just building buildings. You're building futures. You're creating opportunity. You're advancing the Kingdom in one of the world's most underserved regions.

We invite you to be part of something that will echo for generations. Join us in planting a regional center that will bear fruit, in lives, in communities, and in eternity.

## MINISTRY INVESTMENT OPPORTUNITY

SITework, UTILITIES, & LANDSCAPING	\$ 502,000
MASTER WATER PROJECT	\$ 162,000
BUILDING CONSTRUCTION	\$ 718,000
FURNITURE, FIXTURES, & EQUIPMENT	\$ 175,000
AGRICULTURE DEVELOPMENT	\$ 100,000
GENERAL CONDITIONS	\$ 320,000

---

SUBTOTAL	\$ 1,977,000
CONTINGENCY	\$ 197,000
O&A	\$ 326,000

---

TOTAL NEED	\$ 2,500,000
RAISED TO DATE	\$ 2,100,000

---

REMAINING NEED	\$ 400,000
----------------	------------



## Your Legacy

The investment you make in Sierra Leone will impact lives today and souls for eternity, all in the name of Jesus. We ask that you prayerfully consider partnering with us to leave a legacy for the good of the poor and lost and for the glory of God.

Please reach out with any questions. We look forward to meeting needs, feeding souls and elevating God with you.

**Micah McElveen,**  
Founder & CEO  
[micah@vaporministries.org](mailto:micah@vaporministries.org)  
256.208.2065